



YARDSHARK™ PRODUCT INFORMATION

ABOUT YARDSHARK™

Page 2

PRUNING SAWS

Pages 3-7

- 10-5206 RootCutter®
- 10-5437 Pruning & Multi-purpose Saw
- 10-5450 FineCut Pruning Saw
- 10-5460 Heavy Duty Pruning Saw

PRUNING SHEARS

Pages 8 – 10

- 62-5317 Heavy Duty Pruning Shears
- 62-5327 Garden Trimming Shears
- 62-5337 Garden Multi-purpose Shears

HEDGERS & LOPPERS

Pages 11 - 19

- 62-5417 Hedge Trimmer 21", Blade 6"
- 62-5427 Hedge Trimmer 27", Blade 6"
- 62-5437 Hedge Trimmer 24", Blade 8"
- 62-5447 Hedge Trimmer 30", Blade 8"
- 62-5617 Telescopic Hedger/Pruner 30" - 46", Blade 6"
- 62-5457 Daddy Longlegs Pruner 46", Blade 8"
- 62-5517 Bypass Lopper 31"
- 62-5557 Anvil Lopper 31"

Shark Corporation Contact

Web Address:	www.sharkcorp.com	
Consumer Helpline:	800-891-7855	info@sharkcorp.com
Dealer Customer Service:	800-777-5538	service@sharkcorp.com
Fax:	310-513-2199	



In the tradition of Japanese garden and Bonsai art, gardening tools from the Far East resemble fine instruments of artwork. Bonsai techniques require super-sharp blades for clean and precise pruning and grafting.

Combining this Japanese tradition with modern technology has resulted in the YardShark™ series of garden tools. Emphasis is placed on producing the sharpest possible blade, so YardShark™ uses top-grade high-carbon steel. Because traditional drop forge techniques lose the majority of carbon in the process, our YardShark™ garden tools are instead made using a special alloy high-carbon steel process with a high-technology tempering technique to ensure exceptional sharpness and longevity. The blade tells the story and one needs only to try our line of YardShark™ tools to experience and enjoy their superiority and the ability to cut faster, cleaner, and easier.

YARDSHARK™ PRUNING SAWS feature the same technology as our famous PULLSAW® Japanese woodworking saws. Their thin high-quality blades have teeth that are diamond-ground on three cutting edges for maximum sharpness and fast, clean, and easy cuts.

YARDSHARK™ HAND SHEARS are made of high-carbon Japanese steel. Their unique blade design yields very clean cuts with minimal effort and no tearing. These high-quality shears are prized by professionals who demand the best in cutting tools.

YARDSHARK™ HEDGE TRIMMERS are made of high-quality Japanese steel and feature a special blade design with sharp cutting edges to cut branches without slipping. Our uniquely designed lopper (Pat. Pend.) gives maximum power and produces clean cuts without damage to live branches. These superior trimmers owe their lightweight construction to specially designed high-quality thin blades and uniquely constructed thin, but durable, handles.



Blades

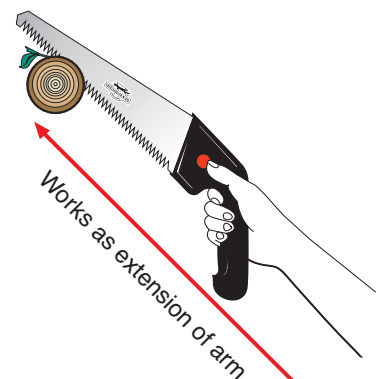
- All YardShark™ blades are made of high-carbon Japanese spring steel.
- Because they cut on-the-pull, YardShark™ blades are able to be thin, lightweight, and sharp.
- The pull-to-cut method prevents binding and buckling.
- The ultra-thin blades produce very clean cuts, promoting healthy growth.
- The tough lacquer finish on blades fights rust and corrosion.
- Blade width is optimized to keep it steady during cutting.
- Tooth, blade, and handle angles are all integrated to maximize cutting performance.

Teeth

- Teeth are precision ground from (not stamped into) the highest quality carbon spring steel.
- Teeth are extremely sharp and feature three cutting edges.
- Teeth are electrically impulse-hardened. They stay sharp two to three times longer than those on ordinary handsaw blades.
- YardShark™ teeth are angled to work most efficiently with a PullCut™.

High-Quality Elastomer Soft Grip Handle

- The ergonomically designed pistol-grip handle provides maximum comfort and efficiency. It actually works as an extension of your arm, so there is no need to cock your wrist when cutting branches—just pull.
- Industrial strength handles are made of reinforced double-injection steel with soft elastomer grips.
- Quick-release button enables you to simply twist to release the saw blade for replacement or for compact storage in a toolbox.





RootCutter®

#10-5206 6", 7 tpi

#10-5208 8", 7 tpi



Rootcutter® is the clean and easy way to cut unwanted roots! It's great for cutting overgrown roots along plastic pipe on irrigation jobs, and it makes a great tool for sod cutting and deep weeding. The stiff, sharply pointed blade of the Rootcutter® plunges into dirt and makes short work of cutting through unwanted roots in lawns and flowerbeds or cleaning roots out of holes or overgrown pots before planting. The high-quality carbon steel blade is impulse-hardened for long-lasting sharpness and chrome-plated to prevent rust. The teeth are extremely sharp—the two-cutting-edge design for pull-to-cut action provides extra power and control. The sure-grip patented handle is designed for comfort, safety, and ease of use and is made of long-lasting high-impact ABS plastic.



MULTI-PURPOSE PRUNING SAW

7-1/2" • 9 tpi Item #10-5437

Replacement blade #01-5437



Interchangeable blade

01-2337

01-3437

Landscape Saw
7-1/2" 12 tpi

Sportsmen's Saw
7-1/2" 9 tpi



This compact and versatile saw is perfect for pruning, camping, and hunting. It will cut anything from greenwood to plastic pipes cleanly, quickly, and easily. Its unique 3-position locking system allows the blade to lock at top-cut for normal use, extra wide to undercut branches, and closed. The hollow-ground blade is made from the finest carbon steel and features no-set teeth to eliminate friction during the cut. The diamond-ground, electrically tempered teeth give long-lasting sharpness, and the chrome finish on the blade retards rust. The comfortable elastomer soft-grip handle provides a sure grip even when wet.

Special SharkSaw® Features:

- **Pull-To-Cut:** The SharkSaw® blade cuts when drawn toward you. This results in a more natural, smoother, straighter, and less fatiguing sawing operation—due in part to SharkSaw's thinner blade.
- **Diamond-Ground:** SharkSaw® blades are precision diamond-ground to sharpen each tooth on three sides. The resulting blades are extremely sharp.
- **Impulse Hardening:** SharkSaw's teeth are electrically hardened to improve longevity. In fact, they hold their edge two to three times longer than conventional blades.
- **Soft & Comfortable Handle:** Industrial strength handle features rubber-like elastomer double-injection, non-slip grips for long-lasting comfort.
- **Replaceable Blade:** Twist-lock design allows for fast, easy replacement of worn blades.



FINECUT PRUNING SAW

12" • 9 tpi Item #10-5450
Replacement blade #01-5450



Interchangeable blade

◦ 01-5450 ◡	◦ 01-2312 ◡	◦ 01-2210 ◡
Pruning Saw 12" 9 tpi	Gen. Carpentry Saw 12" 14 tpi	Miter Saw 14" 18 tpi
◦ 01-2214 ◡	◦ 01-2420 ◡	
Composit™ Saw 14" 9 tpi	FineCut Saw 10-5/8" 15 tpi	



This sharp FineCut Pruning Saw produces the clean cuts that are so important for healthy trees and shrubs. Its unique blade shape—narrow toward the tip—allows it to fit into tight spaces between branches. This saw is especially prized by professional gardeners because its thin PULLCUT® blade has teeth with three sharp cutting edges for fast, easy cuts. The double-tempered teeth remain sharp at least three times longer than other pruning saws on the market. A comfortable (patented) pistol grip elastomer handle with quick-release blade design permits toolbox storage and easy replacement of worn blades.

Special SharkSaw® Features:

- **Pull-To-Cut:** The SharkSaw® blade cuts when drawn toward you. This results in a more natural, smoother, straighter, and less fatiguing sawing operation—due in part to SharkSaw's thinner blade.
- **Diamond-Ground:** SharkSaw® blades are precision diamond-ground to sharpen each tooth on three sides. The resulting blades are extremely sharp.
- **Impulse Hardening:** SharkSaw's teeth are electrically hardened to improve longevity. In fact, they hold their edge two to three times longer than conventional blades.
- **Soft & Comfortable Handle:** Industrial strength handle features rubber-like elastomer double-injection, non-slip grips for long-lasting comfort.
- **Replaceable Blade:** Twist-lock design allows for fast, easy replacement of worn blades.

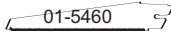
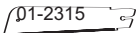



HEAVY DUTY PRUNING SAW

15" • 8 tpi Item #10-5460

Replacement blade #01-5460



Interchangeable blade	
 01-5460	 01-2315
Heavy Duty Pruning Saw 15" 8 tpi	Gen. Carpentry Saw 15" 10 tpi
 01-2318	
Gen. Carpentry Saw 18" 8 tpi	

The blade on this heavy-duty saw makes short work of larger pruning jobs. The 8-tpi blade cuts aggressively yet leaves clean cut surfaces. This saw is especially prized by professional gardeners because the teeth on its thin PULLCUT® blade have three sharp cutting edges for fast, easy cuts. The teeth are double-tempered to remain sharp at least three times longer than other pruning saws on the market. The comfortable (patented) pistol grip elastomer handle with quick-release blade design permits toolbox storage and easy replacement of worn blades.

Special SharkSaw® Features:

- **Pull-To-Cut:** The SharkSaw® blade cuts when drawn toward you. This results in a more natural, smoother, straighter, and less fatiguing sawing operation—due in part to SharkSaw’s thinner blade.
- **Diamond-Ground:** SharkSaw® blades are precision diamond-ground to sharpen each tooth on three sides. The resulting blades are extremely sharp.
- **Impulse Hardening:** SharkSaw’s teeth are electrically hardened to improve longevity. In fact, they hold their edge two to three times longer than conventional blades.
- **Soft & Comfortable Handle:** Industrial strength handle features rubber-like elastomer double-injection, non-slip grips for long-lasting comfort.
- **Replaceable Blade:** Twist-lock design allows for fast, easy replacement of worn blades.



HEAVY-DUTY PRUNING SHEARS

Item #62-5317



These Heavy-Duty Pruning Shears are lightweight and extremely sharp—perfect for pruning all kinds of live and dead branches up to 3/4" in diameter. It is uniquely designed to open in a wide “U” shape to direct the branch deep into the critical leverage point for greater cutting power with minimal effort. The thin cutting blades are made of high-quality double-tempered Japanese steel. The small bevels on the inner sides of the blades facilitate smooth cuts. The blades are hand-sharpened and, although designed to remain sharp, can be resharpened with a very fine diamond file. For maximum cutting power, the strong ergonomically designed elastomer handles are slightly offset from the pivotal point of the blades. The simple wire safety catch on the end of the handle positively locks the blades.



GARDEN TRIMMING SHEARS

Item #62-5327



The lightweight Garden Trimming Shears are very sharp and easily cut live branches up to 3/8" in diameter. The narrow long-nose blades are perfect for cutting flowers and for precise trimming of interior branches for better air circulation. Florists appreciate their overall lightness, extreme sharpness, and narrow blades for daily flower arranging. Orchid growers especially prize these shears for their extremely fine and clean cuts. The thin cutting blades are made of high-quality double-tempered Japanese steel. The small bevels on the inner sides of the blades facilitate smooth cuts. The blades are hand-sharpened and, although designed to remain sharp, can be resharpened with a very fine diamond file. For maximum cutting power, the strong ergonomically designed elastomer handles are slightly offset from the pivotal point of the blades. The simple wire safety catch on the end of the handle positively locks the blades.



GARDEN MULTI-PURPOSE SHEARS

Item #62-5337



The Garden Multi-Purpose shears are lightweight and extremely sharp to easily cut live branches up to 1/2" in diameter. Their combined sharpness for fine cuts on living plants and power to cut plastic plant containers make these shears very useful for professional gardeners and landscapers. The long nose easily reaches the interior growth of plants and shrubs. The thin cutting blades are made of high-quality double-tempered Japanese steel. The small bevels on the inner sides of the blades facilitate smooth cuts. The blades are hand-sharpened and, although designed to remain sharp, can be resharpened with a very fine diamond file. For maximum cutting power, the strong ergonomically designed elastomer handles are slightly offset from the pivotal point of the blades. The simple wire safety catch on the end of the handle positively locks the blades.



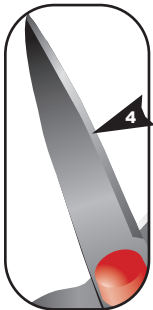
Super Sharp – All YardShark™ blades are forged in the ancient tradition of Japanese Bonsai art from top grade, high-carbon Japanese steel, then cut to shape and hardened. Sharpened blades are then double-tempered for superb sharpness that lasts three times longer than blades fashioned by traditional drop forge methods. Each shearing curvature is hand-adjusted for the cleanest cut, and a special hard coating protects blades from rust while assuring smooth friction-free operation and minimal sap buildup. The blade effectively cuts along its entire length with minimum loss of power at the tip.

Super Light, Super Comfortable – YardShark™ handles are crafted with pressure-extruded aluminum, making them extremely lightweight. Their oval shape enhances strength and resists bending. Each handle is then fitted with ergonomically-designed grips for exceptional comfort, greater leverage, and great balance. A special rubber-like elastomer provides a non-slip, shock-absorbing, heat-resistant surface that makes YardShark™ products a pleasure to use.



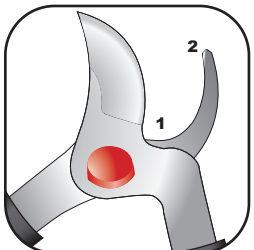
Cutting Edges are Precision Engineered

- 1: Hand-ground, double-tempered blade produces the sharpest cutting edge.
- 2: Beveling of the blade helps prevent chipping and maintains a sharp edge.
- 3: Interior surfaces are ground slightly concave to reduce friction and sap buildup.
- 4: Curvature of edge helps prevent wood slippage.



Adjustable Blade Tension

The cap over the self-locking hinge nut prevents water from entering but is easily removed when adjustment is required by inserting a knife under the cap.



Special Features for Greater Cutting Power

Blades overlap to create greater cutting power all the way to the blade tips.

Special Unique Design (Pat. pend.)

- 1: Specially designed wide "U" opening enables insertion of larger branches deep into the critical leverage point for greater cutting power with minimal effort.

- 2: The tip of the counter blade is ground for ease of bypass.

Double the Power

Compound hinge mechanism provides twice the cutting power for the Anvil Lopper.



Shock-Absorbing

Special bumpers absorb shock and vibration, reducing fatigue even during extended use.



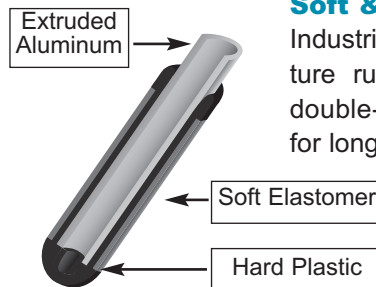
Strong—Yet Lightweight

YardShark™ handles are made from strong, yet lightweight, aluminum. Their extruded oval shape creates the most advantageous combination of lightness and strength. Handles are fully extended to the end of the grip.



Easy Extension

Telescopic hedger handle features a simple flip-locking mechanism for easy one-handed operation. Flip open, micro-adjust to desired length, and flip closed to lock and secure into place.



Soft & Comfortable

Industrial strength handles feature rubber-like elastomer and double-injection non-slip grips for long-lasting comfort.



HEDGER TRIMMER

Item #62-5417

Blade Length: 6" Total Length: 21" Weight: 1 lb. 5 oz.



Cuts up to
3/8" D



This short and lightweight trimmer is great for hedge trimming, pruning, cutting grass, shaping topiary, and container gardening. It cuts branches up to 3/8" in diameter. Manufactured from the finest high-carbon Japanese steel, its extremely sharp blades feature a unique design and cutting lengths for pruning and shaping shrubs and hedges. The blades are pressed, sharpened, and double-tempered for long-lasting sharpness. This pressed steel technology produces thin, durable blades that remain sharp for clean, easy, and fast cuts. The hedger also features lightweight aluminum extruded oval handles for added strength and round handles with soft elastomer grips for comfort.



HEDGER TRIMMER

Item #62-5427

Blade Length: 6" Total Length: 27" Weight: 1 lb. 6 oz.



Cuts up to
3/8" D



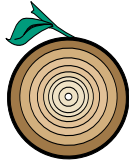
This short and lightweight trimmer is great for hedge trimming, pruning, and container gardening. It cuts branches up to 3/8" in diameter. Manufactured from the finest high-carbon Japanese steel, the extremely sharp blades feature a unique design and cutting lengths for pruning and shaping shrubs and hedges. The blades are pressed, sharpened, and double-tempered for long-lasting sharpness. This pressed steel technology produces thin, durable blades that remain sharp for clean, easy, and fast cuts. The hedger also features lightweight aluminum extruded oval handles for added strength and round handles with soft elastomer grips for comfort.



HEDGER TRIMMER

Item #62-5437

Blade Length: 8" Total Length: 24" Weight: 2 lb.



Cuts up to
3/8" D



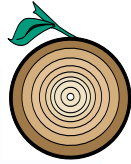
Great for hedge trimming and pruning, this Hedger/Trimmer cuts branches up to 5/8" in diameter. It is manufactured from the finest high-carbon Japanese steel, and its extremely sharp blades feature a unique design and cutting lengths for pruning and shaping shrubs and hedges. The blades are pressed, sharpened, and double-tempered for long-lasting sharpness. This pressed steel technology produces thin, durable blades that remain sharp for clean, easy, and fast cuts. The hedger also features lightweight aluminum extruded oval handles for added strength and round handles with soft elastomer grips for comfort.



HEDGER TRIMMER

Item #62-5447

Blade Length: 8" Total Length: 30" Weight: 2 lb. 2 oz.



Cuts up to
3/8" D



Great for heavy-duty hedge trimming and pruning jobs, this Hedger Trimmer cuts branches up to 5/8" in diameter. It is manufactured from the finest high-carbon Japanese steel, and its extremely sharp blades feature a unique design and cutting lengths for pruning and shaping shrubs and hedges. The blades are pressed, sharpened, and double-tempered for long-lasting sharpness. This pressed steel technology produces thin, durable blades that remain sharp for clean, easy, and fast cuts. The hedger also features lightweight aluminum extruded oval handles for added strength and round handles with soft elastomer grips for comfort.



TELESCOPIC HEDGER/PRUNER

Item #62-5617

Blade Length: 6" Total Length: 30" extends to 46"

Weight: 2 lb. 4 oz.



Cuts up to
3/8" D



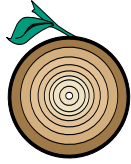
This Telescopic Hedger/Pruner features an ingenious flip-lock extension mechanism that allows the device to grow from 31 to 46 inches—with a single-handed flip of a lever. It is adjustable to the desired length for hedge trimming and container gardening and also to reach high tree branches, trim the insides of bushes, and cut overgrown thorn bushes. It cuts branches up to 3/8" in diameter. Manufactured from the finest high-carbon Japanese steel, the extremely sharp blades feature a unique design and cutting lengths for pruning and shaping shrubs and hedges. The blades are pressed, sharpened, and double-tempered for long-lasting sharpness. This hedger also features lightweight aluminum extruded oval handles for added strength and round handles with soft elastomer grips for comfort.



DADDY LONGLEGS PRUNER

Item #62-5457

Blade Length: 8" Total Length: 46" Weight: 2 lb. 7 oz.



Cuts up to
3/8" D



The unique length of this Pruner enables you to reach high tree branches and canopies, trim the insides of bushes, and cut overgrown thorn bushes. The longer blades and handles make this tool suitable for heavy-duty professional jobs. It cuts branches up to 5/8" in diameter. Manufactured from the finest high-carbon Japanese steel, the extremely sharp blades feature a unique design and cutting lengths for pruning and shaping shrubs and hedges. The blades are pressed, sharpened, and double-tempered for long-lasting sharpness. This pressed steel technology produces thin, durable blades that remain sharp for clean, easy, and fast cuts. The pruner also features lightweight aluminum extruded oval handles for added strength and round handles with soft elastomer grips for comfort.



BYPASS LOPPER

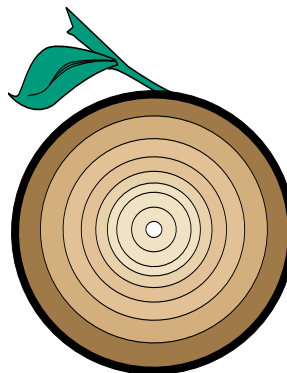
Item #62-5517

Total Length: 31" Weight: 2 lb. 7 oz.



This heavy-duty Bypass Lopper is extremely sharp—perfect for cutting all types of green and dead branches up to 1-1/2" in diameter. It is uniquely designed to open in a wide “U” shape to direct the branch deep into the critical leverage point for greater cutting power with minimal effort. It is manufactured from the finest high-carbon Japanese steel, and the extremely sharp blades are pressed, sharpened, and double-tempered for long-lasting sharpness. This pressed steel technology produces thin, durable blades that remain sharp for clean, easy, and fast cuts. The lopper also features lightweight aluminum extruded oval handles for added strength and round handles with soft elastomer grips for comfort.

•**Tip:** Cut limbs at a slight angle to prevent damage to the bark and for clean and easy cuts.



Cuts up to
1-1/2" D



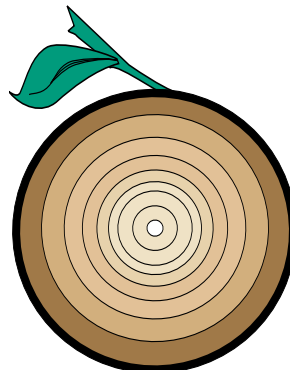
ANVIL LOPPER

Item #62-5557

Total Length: 31" Weight: 2 lb. 7 oz.



This compound-hinge anvil lopper provides the operator with incredible cutting leverage. Extremely sharp, it cuts the most stubborn branches—including dry or dead wood—up to 1-1/2" in diameter with ease. It is manufactured from the finest high-carbon Japanese steel, and the extremely sharp blades are pressed, sharpened, and double-tempered for long-lasting sharpness. This pressed steel technology produces thin, durable blades that remain sharp for clean, easy, and fast cuts. The lopper also features lightweight aluminum extruded oval handles for added strength and round handles with soft elastomer grips for comfort.



Cuts up to
1-1/2" D